

LUNG CANCER **UPDATES**

AACR HIGHLIGHTS

29 MARZO - 3 ABRIL 2019



ATLANTA

Iniciativa científica de:



Grupo Español de Cáncer de Pulmón
Spanish Lung Cancer Group



LUNG CANCER
UPDATES
AACR HIGHLIGHTS
29 MARZO - 3 ABRIL 2019



ATLANTA

Earlier detection of cancer: who, where and what to screen

Dr. Juan Felipe Córdoba

Iniciativa científica de:



Grupo Español de Cáncer de Pulmón
Spanish Lung Cancer Group

'EARLY' CIRCULATING TUMOUR CELLS

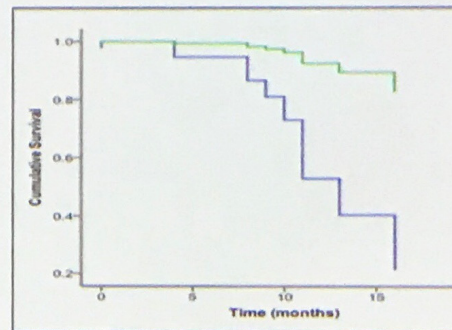
Stage	CTC count	
	Peripheral	Pulmonary
1	0	0
1	0	0
1	0	0
1	1	0
1	0	0
1	1	0
1	0	0
1	0	0
1	0	2
1	0	14
1	0	16
1	0	125
2	0	0
2	1	0
2	0	0
2	0	0
2	0	1
2	0	12
2	4	18
2	0	18
2	0	59
2	0	306
2	0	3093
3	2	0
3	0	0
3	0	0
3	0	0
3	1	0
3	0	1
3	0	16
3	1	140
4	0	3
4	0	33

CTCs are 'out and about' early

Can we find CellSearch CTCs in the **pulmonary vein** when patients with stage I-III NSCLC have tumour resection with curative intent - 50% patients recur with metastatic disease



Pilot study (n=32)



— CTC negative
— CTC positive

Disease Free Survival stratified according to CTC status.

Further analysed in the TRACERx consortium.....



MANCHESTER INSTITUTE

Crosbie et al, J Thoracic Oncology, 2016



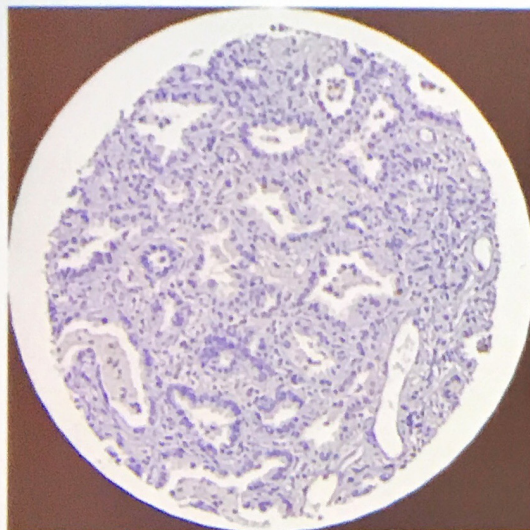
Iniciativa científica de:



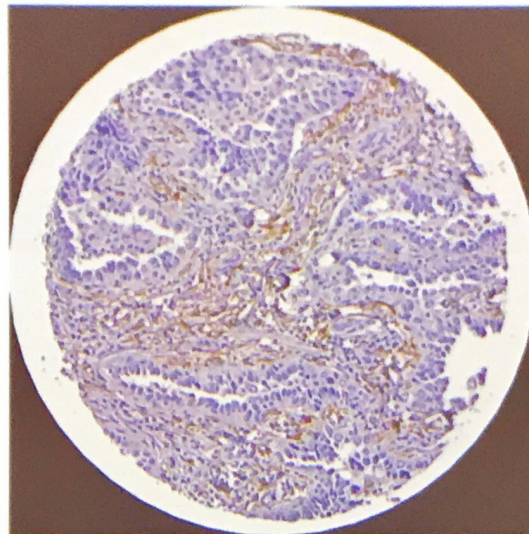
Grupo Español de Cáncer de Pulmón
Spanish Lung Cancer Group

GFAT2 Expression on TMA of Lung Adenocarcinoma (n=211)

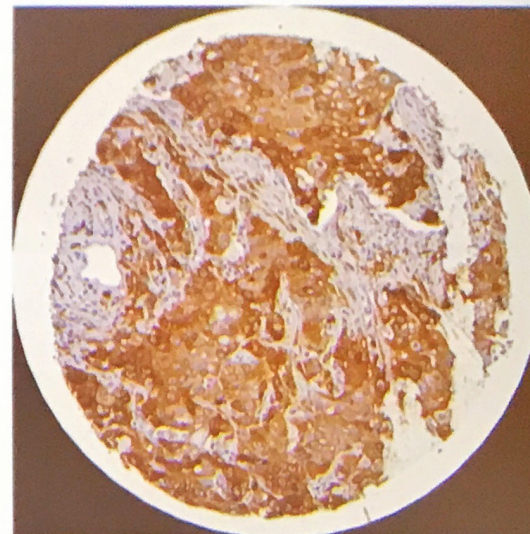
Low SUVmax



Moderate to High SUVmax



High SUVmax



- GFAT2 increases first in fibroblasts, then in malignant cells
- GFAT2 predicts SUV, independent of GLUT1

Zhang et al., *Cancer Research* 2018

Iniciativa científica de:



Grupo Español de Cáncer de Pulmón
Spanish Lung Cancer Group