



Mesotelioma Pleural

Dr. Ernest Nadal

Iniciativa científica de:



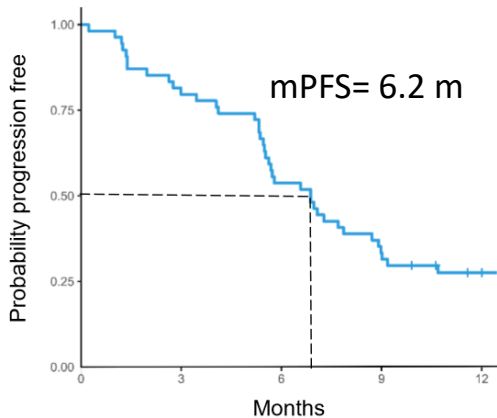
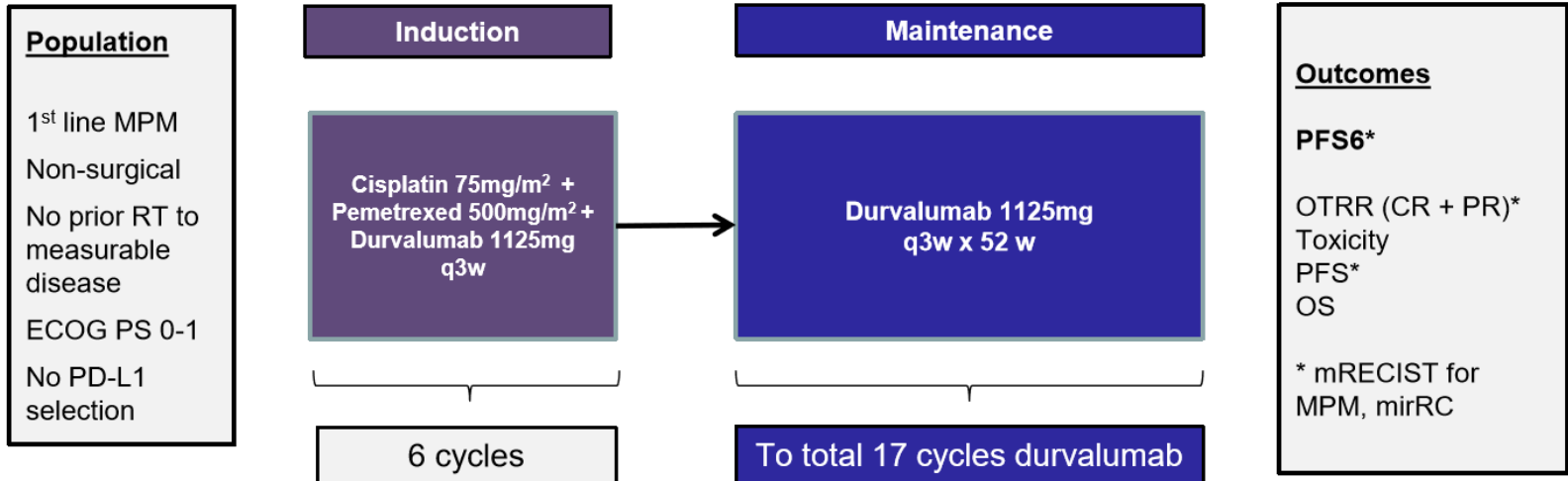
Grupo Español de Cáncer de Pulmón
Spanish Lung Cancer Group

Update on studies with anti-PD1 therapy in pleural mesothelioma

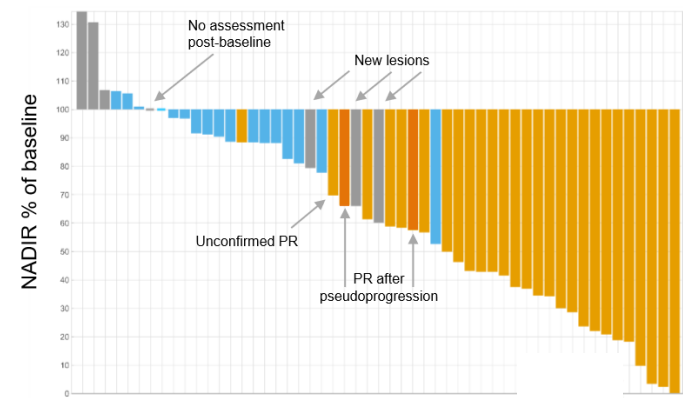
Study	Drug	PD-L1	ORR	mPFS	mOS
MERIT Ph2 (n=34) 2/3L	Nivolumab 240 mg Q2W	+/-	29.4% (40% in PD-L1+)	6.1 m (7.2 m in PD-L1+)	17.3m (17.3m in PD-L1+)
Chicago Ph2 (n=64) 2/3L	Pembrolizumab 200mg Q3W	+/-	22% (25% 1-49%; 43% ≥50%)	4.1 m (4.9 m in PD-L1 high)	11.5m (12.5m in PD-L1 high)

DREAM study (phase 2)

Trial design – Single-arm, multicentre phase II trial with a safety run-in, N= 56

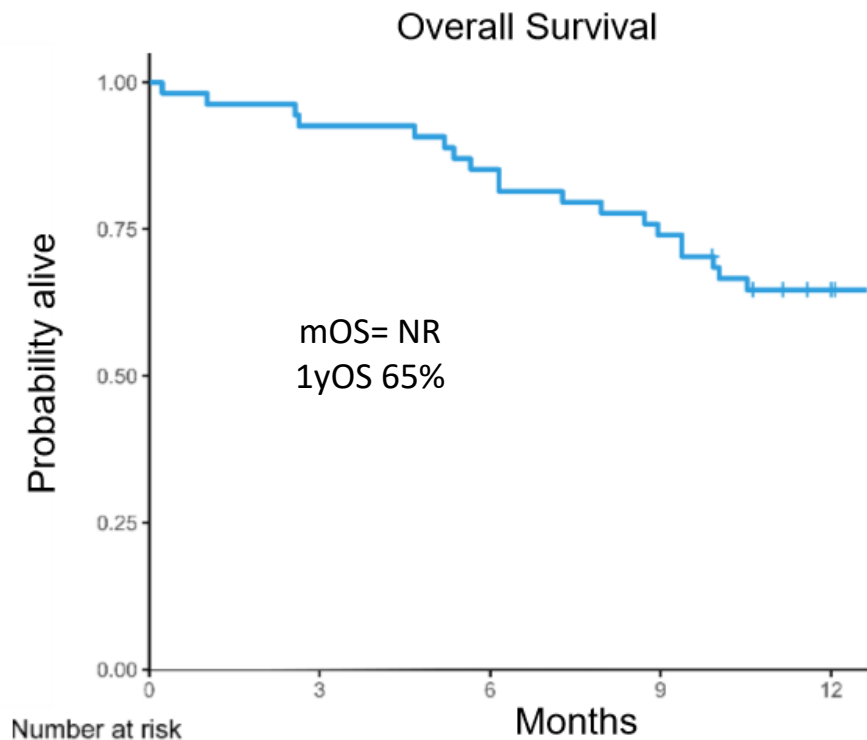


	Confirmed response mRECIST (%)	Confirmed response iRECIST (%)
Complete response	0	0
Partial response	26 (48)	27 (50)
Stable disease	20 (37)	20 (37)
Progressive disease	8 (15)	7 (13)
Total	54	54



Number at risk

Adverse events



	Participants (%)
Adverse events grade 3-5	36 (66)
Immune-related adverse events grade 3-4	8 (15)
Immune-related adverse events (any grade) requiring high dose steroids or other immunosuppression	7 (13)
Death during study treatment*	5 (9)