



ASCO HIGHLIGHTS

31 MAYO - 4 JUNIO 2019



Con la colaboración de:



Bristol-Myers Squibb

illumina

Lilly



ASCO HIGHLIGHTS

31 MAYO - 4 JUNIO 2019



Inmunoterapia en cáncer de pulmón metastásico

Dr. Delvys Rodríguez

Día 3

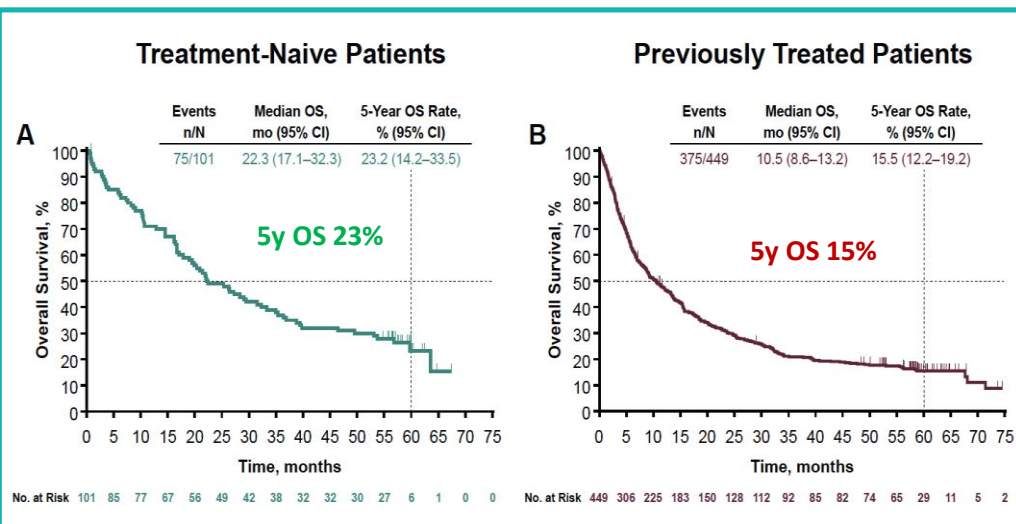
Con la colaboración de:



illumina

Lilly

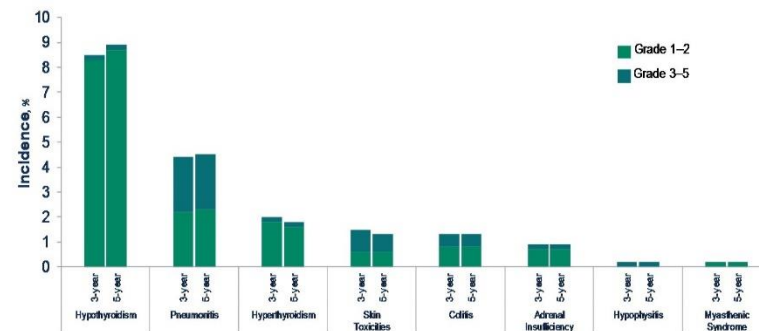
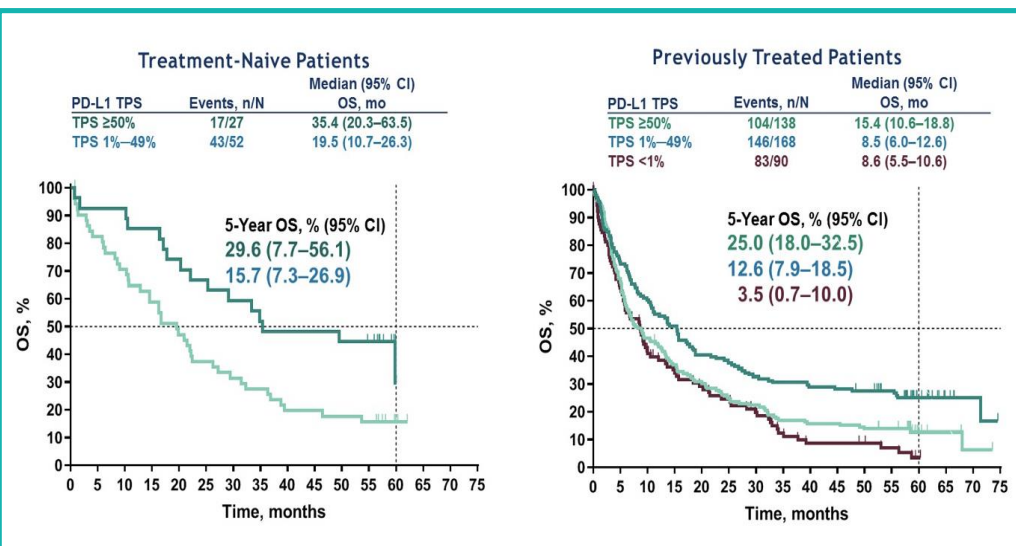
5-Year OS from KEYNOTE-001



Late Toxicities

Abstract LBA9015: 5-year long-term overall survival for patients with advanced NSCLC treated with pembrolizumab: late toxicities

92 patients (17%) experienced an immune-mediated AE



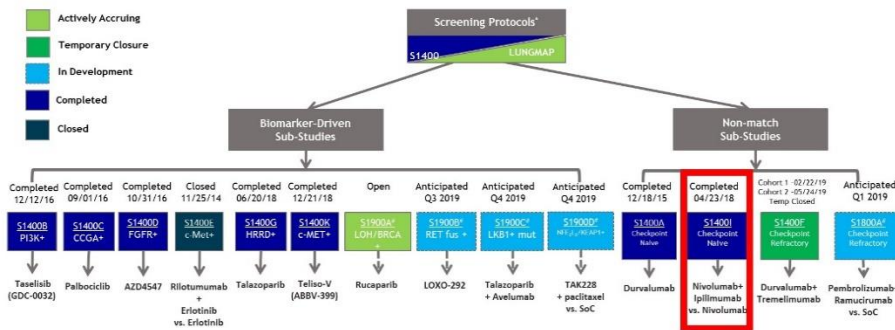
PRESENTED AT: **2019 ASCO ANNUAL MEETING**

#ASCO19
View data for property of the author.
permission required for reuse.

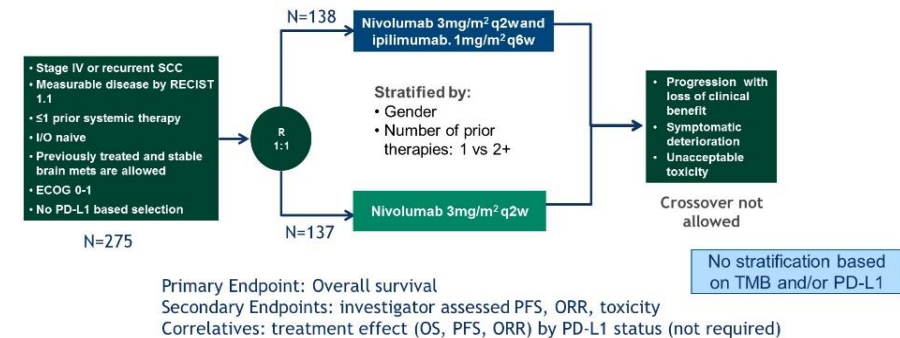
PRESENTED BY: Kathryn C. Adams

Lung MAP: Nivo vs Nivo/Ipi previously treated squamous

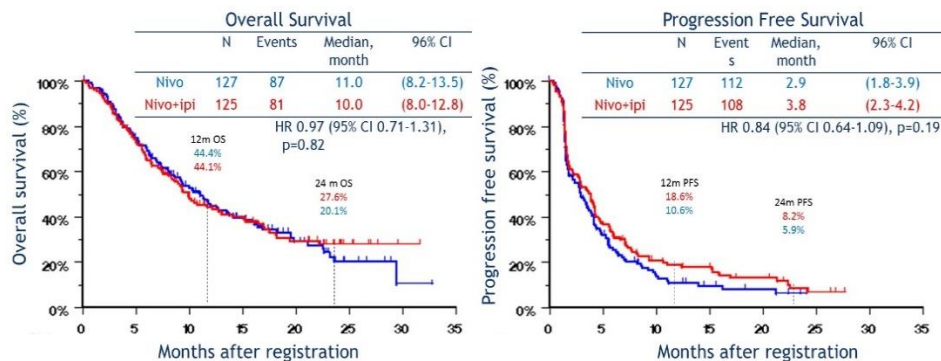
Abstract 9014: A phase III randomized study of nivo/ipi vs nivo for previously treated patients with Squamous Lung Cancer (Lung-MAP Sub-Study S1400I)



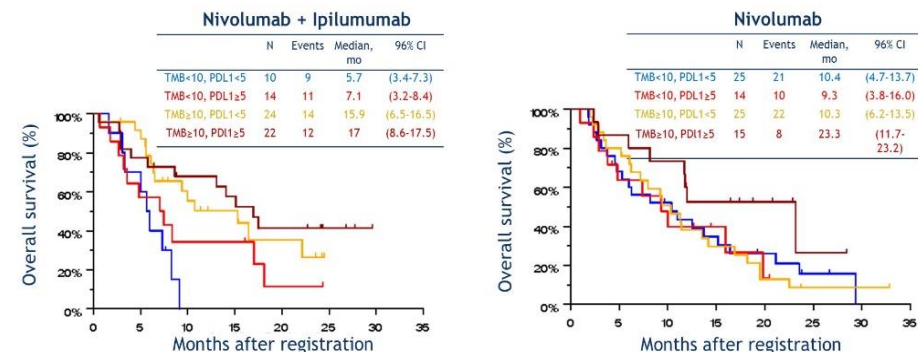
Abstract 9014: A phase III randomized study of nivo/ipi vs nivo for previously treated patients with Squamous Lung Cancer (Lung-MAP Sub-Study S1400I)



Abstract 9014: Lung MAP: Nivo vs Ipi/Nivo in previously treated squamous lung cancer: OS and PFS

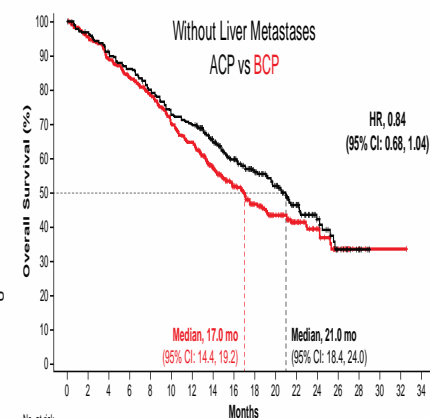
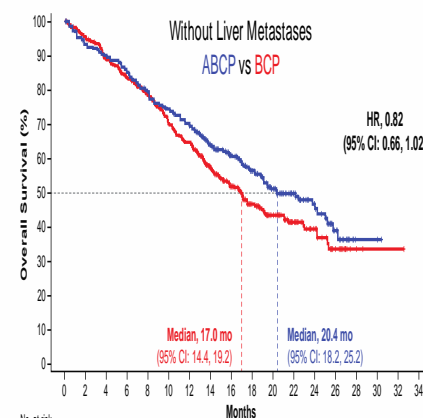
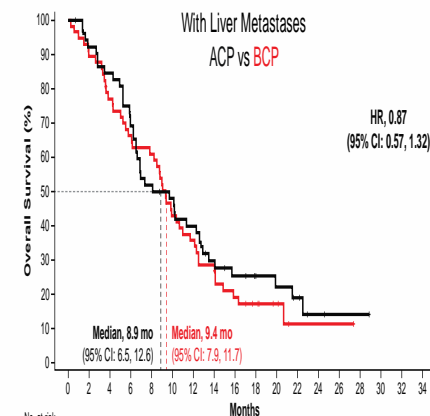
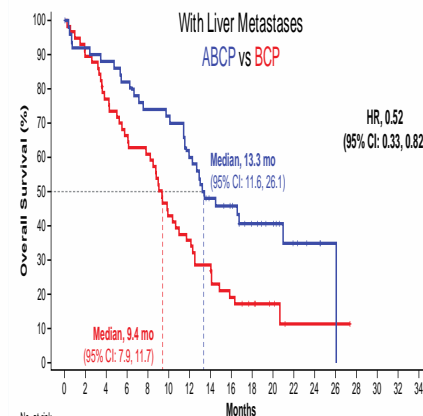
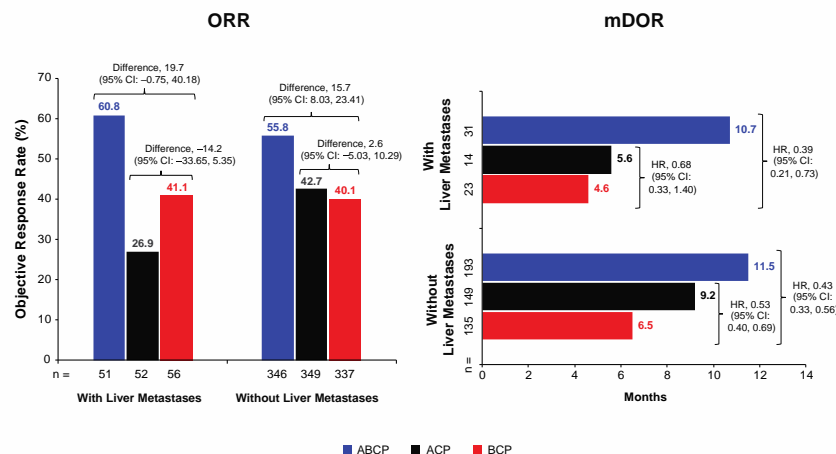


Abstract 9014: Lung MAP: Nivo vs Ipi/Nivo in previously treated squamous lung cancer: OS by TMB and PD-L1



1L NSCLC: IMpower150

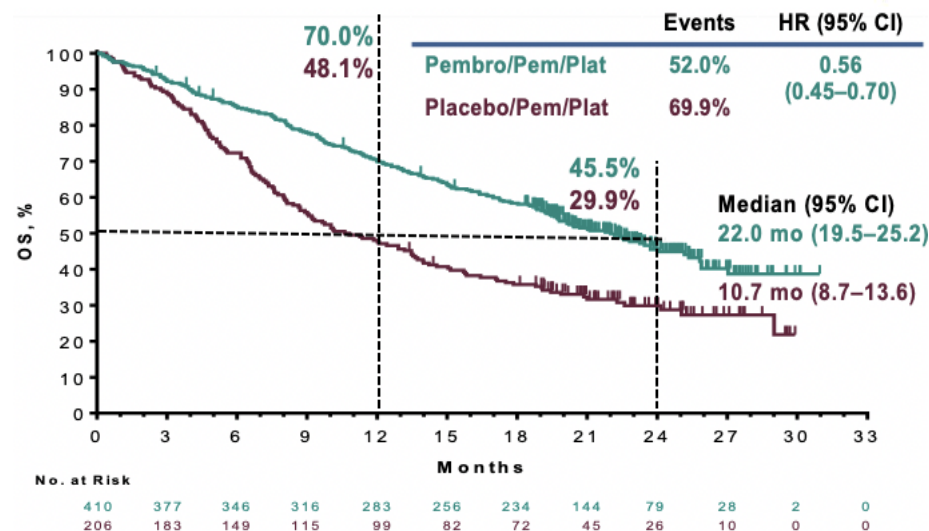
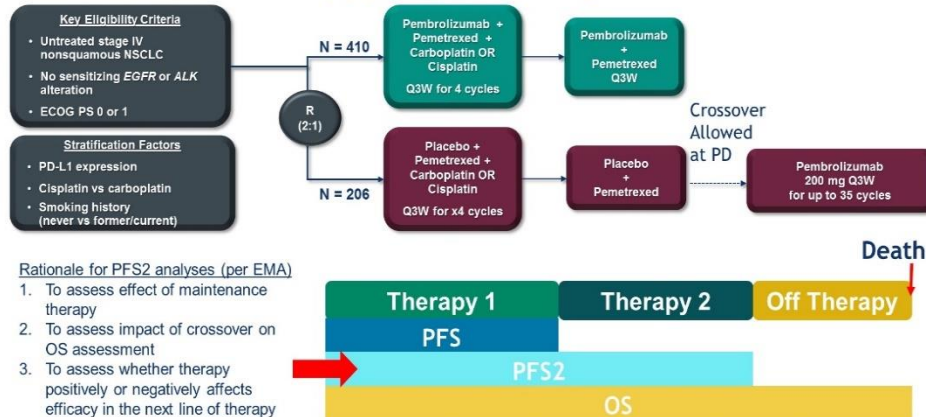
• Liver Metastases



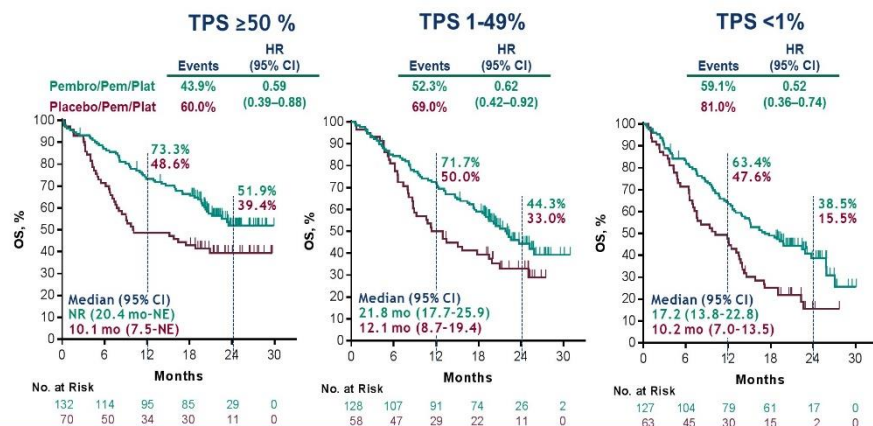
	With Liver Metastases			Without Liver Metastases		
	ABCP (n = 48)	ACP (n = 52)	BCP (n = 55)	ABCP (n = 345)	ACP (n = 348)	BCP (n = 339)
Patients with ≥ 1, n (%)						
AE	48 (100)	49 (94.2)	55 (100)	338 (98.0)	342 (98.3)	335 (98.8)
Grade 3/4	28 (58.3)	29 (55.8)	35 (63.6)	222 (64.3)	201 (57.8)	195 (57.5)
Grade 5	6 (12.5)	1 (1.9)	4 (7.3)	18 (5.2)	9 (2.6)	17 (5.0)
TRAE	43 (89.6)	45 (86.5)	51 (92.7)	327 (94.8)	332 (95.4)	326 (96.2)
Grade 3/4	25 (52.1)	19 (36.5)	30 (54.5)	198 (57.4)	153 (44.0)	161 (47.5)
Grade 5 ^a	3 (6.3)	1 (1.9)	2 (3.6)	8 (2.3)	3 (0.9)	7 (2.1)
Serious AE	20 (41.7)	26 (50.0)	27 (49.1)	154 (44.6)	131 (37.6)	108 (31.9)
Serious TRAE	7 (14.6)	13 (25.0)	18 (32.7)	96 (27.8)	65 (18.7)	60 (17.7)
AE leading to any treatment discontinuation	13 (27.1)	6 (11.5)	20 (36.4)	120 (34.8)	47 (13.5)	78 (23.0)
AE leading to any dose modification/interruption	26 (54.2)	23 (44.2)	26 (47.3)	220 (63.8)	184 (52.9)	162 (47.8)

1L NSCLC: KEYNOTE-189

Abstract 9013: KEYNOTE-189: Updated OS and progression after the next line of therapy (PFS2): Study Design



Abstract 9013: KEYNOTE-189: Updated OS analysis by PD-L1 TPS



Abstract 9013: KEYNOTE-189: Progression after 2nd line of therapy (PFS2)

